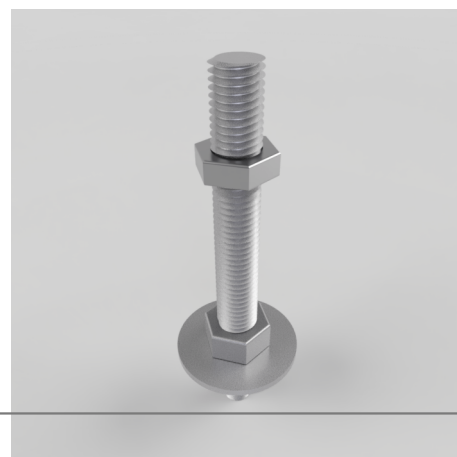


Stainless steel threaded adjusting stem

Product code: STM24X150/HALF

M24 X 150MM Threaded stainless steel adjusting unit which is fitted to a 12mm bolt hole castor. *shallow fixing nut



Thread Diameter (mm)	24
Thread Length (mm)	150

BIL GROUP LTD

Porte Marsh Road, Calne, Wiltshire, SN11 9BW

Registered in England No: 2603821

VAT Reg: GB572705729

