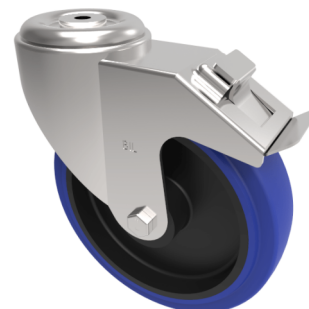


Stainless Steel Blue Elastic Rubber 65ShoreA Bolt Hole Swivel Castor Brake 200mm 500kg

Product code: SSMM200SRNBJBH16SWB

Grade 304 Pressed stainless steel swivel castor with a 16mm bolthole fitted with a blue 65 shore A elastic rubber tyre on a black nylon centred wheel with ball bearings and a total lock brake . 200mm wheel diameter, 50mm tread width, 235mm overall height with a load capacity of 500kgs REACH compliant also PAH-Free rubber to confirm to EU-directive 2005/69/EC



| | |
|--------------------------|---|
| Diameter (mm) | 200 |
| Fixing Option | Bolt Hole |
| Castor Type | Swivel with Total Lock Brake |
| Height (mm) | 235 |
| Wheel Material | Rubber on Nylon |
| Colour / Shore Hardness | Blue Elastic Rubber on Nylon Rim / 65 Shore A |
| Bearing Type | Ball |
| Tread (mm) | 50 |
| Fork Thickness (mm) | 3 |
| To Suit Fixing Bolt (mm) | 16 |
| Load Capacity (kg) | 500 |
| Temperature Resistance | -30 °C TO +80 °C |
| Head Dia (mm) | 115 |
| Swivel Radius (mm) | 167 |

BIL GROUP LTD

Porte Marsh Road, Calne, Wiltshire, SN11 9BW

Registered in England No: 2603821

VAT Reg: GB572705729

