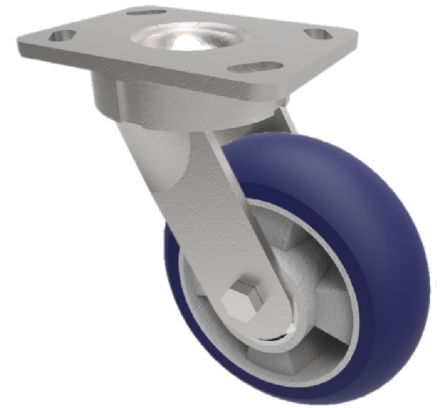


## Softer Ergonomic Polyurethane Plate Swivel Castor 160mm 550kg Load

**Product code: BZK160RSPABJ**



Fabricated swivel castor with top plate fixing fitted with a Blue 75 Shore A blue ergonomic polyurethane tyre on an aluminium centred wheel with ball bearings. Wheel diameter 160mm, tread width 50mm, overall height 205mm, top plate 150mm x 110mm, hole centres 105mm x 80mm or 121mm x 59mm. Load capacity 550kg at 4kph and 220kg at 16kph \*\* FOR INTERNAL AND EXTERNAL TOWING USE \*\*

Diameter (mm)	160
Fixing Option	Plate
Castor Type	Swivel
Bearing Type	Ball
Height (mm)	205
Plate Size (mm)	150 x 110
Hole Centres (mm)	105/121 x 80/59
To Suit Fixing Bolt (mm)	12
Wheel Material	Polyurethane on Aluminium
Colour / Shore Hardness	Blue Ergonomic Polyurethane on Aluminium Rim / 75 Shore A
Temperature Resistance	-20 °C TO +70 °C
Top Plate Thickness (mm)	7.5
Fork Thickness (mm)	6
Swivel Radius (mm)	135
Load Capacity (kg)	550
Tread (mm)	50

### BIL GROUP LTD

Porte Marsh Road, Calne, Wiltshire, SN11 9BW

Registered in England No: 2603821

VAT Reg: GB572705729

