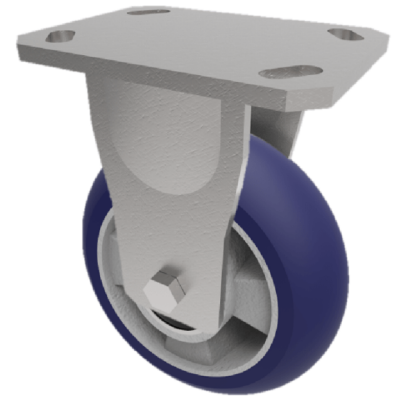


Softer Ergonomic Polyurethane Plate Fixed Castor 160mm 550kg Load

Product code: BZKF160RSPABJ



Fabricated fixed castor with top plate fixing fitted with a Blue 75 Shore A blue ergonomic polyurethane tyre on an aluminium centred wheel with ball bearings. Wheel diameter 160mm, tread width 50mm, overall height 205mm, top plate 150mm x 110mm, hole centres 105mm x 80mm or 121mm x 59mm. Load capacity 550kg at 4kph and 220kg at 16kph ** FOR INTERNAL AND EXTERNAL TOWING USE **

| | |
|--------------------------|---|
| Diameter (mm) | 160 |
| Fixing Option | Plate |
| Castor Type | Fixed |
| Bearing Type | Ball |
| Height (mm) | 205 |
| Plate Size (mm) | 150 x 110 |
| Hole Centres (mm) | 105/121 x 80/59 |
| To Suit Fixing Bolt (mm) | 12 |
| Wheel Material | Polyurethane on Aluminium |
| Colour / Shore Hardness | Blue Ergonomic Polyurethane on Aluminium Rim / 75 Shore A |
| Temperature Resistance | -20 °C TO +70 °C |
| Top Plate Thickness (mm) | 7.5 |
| Fork Thickness (mm) | 6 |
| Load Capacity (kg) | 550 |
| Tread (mm) | 50 |

BIL GROUP LTD

Porte Marsh Road, Calne, Wiltshire, SN11 9BW

Registered in England No: 2603821

VAT Reg: GB572705729

