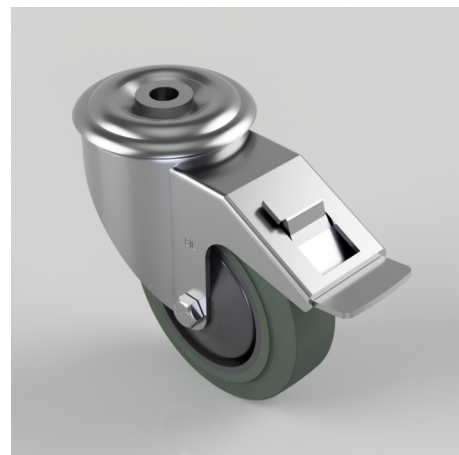


Soft Grey Rubber Bolt Hole Swivel Castor Brake 100mm 100kg Load

Product code: BZMM100STPRBJBH12SWB

Pressed steel swivel castor with a 12mm bolt hole fitted with a 65 shore A grey thermoplastic rubber tyre on grey polypropylene centre wheel with single ball bearing with retaining caps and a total lock brake. Wheel diameter 100mm, tread width 32mm, overall height 128mm, Load capacity 100kg. REACH compliant also PAH-Free rubber to confirm to EU-directive 2005/69/EC



| | |
|--------------------------|---|
| Diameter (mm) | 100 |
| Castor Type | Swivel with Total Lock Brake |
| Fixing Option | Bolt Hole |
| Height (mm) | 128 |
| Wheel Material | Rubber on Polypropylene |
| Colour / Shore Hardness | Grey Elastic Rubber on Polypropylene Rim / 65 Shore A |
| Temperature Resistance | -20 °C TO +60 °C |
| Bearing Type | Ball |
| Load Capacity (kg) | 100 |
| Tread (mm) | 32 |
| Swivel Radius (mm) | 119 |
| Head Dia (mm) | 76 |
| Fork Thickness (mm) | 2.5 |
| To Suit Fixing Bolt (mm) | 12 |

BIL GROUP LTD

Porte Marsh Road, Calne, Wiltshire, SN11 9BW

Registered in England No: 2603821

VAT Reg: GB572705729

