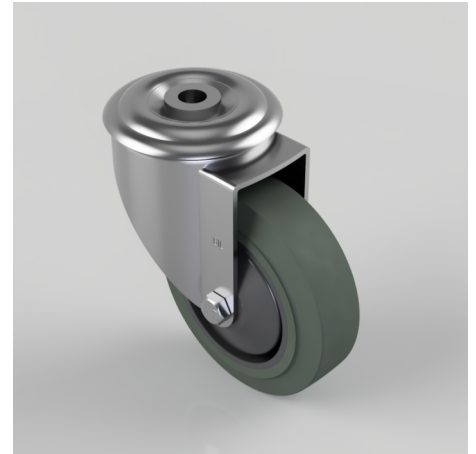


## Soft Grey Rubber Bolt Hole Swivel Castor 100mm 100kg Load

**Product code: BZMM100STPRBJBH12**

Pressed steel swivel castor with a 12mm bolt hole fitted with a 65 shore A grey thermoplastic rubber tyre on grey polypropylene centre wheel with single ball bearing with retaining caps. Wheel diameter 100mm, tread width 32mm, overall height 128mm, Load capacity 100kg. REACH compliant also PAH-Free rubber to confirm to EU-directive 2005/69/EC



Diameter (mm)	100
Castor Type	Swivel
Fixing Option	Bolt Hole
Height (mm)	128
Wheel Material	Rubber on Polypropylene
Colour / Shore Hardness	Grey Elastic Rubber on Polypropylene Rim / 65 Shore A
Temperature Resistance	-20 °C TO +60 °C
Bearing Type	Ball
Load Capacity (kg)	100
Tread (mm)	32
Swivel Radius (mm)	88
Head Dia (mm)	76
Fork Thickness (mm)	2.5
To Suit Fixing Bolt (mm)	12

### BIL GROUP LTD

Porte Marsh Road, Calne, Wiltshire, SN11 9BW

Registered in England No: 2603821

VAT Reg: GB572705729

