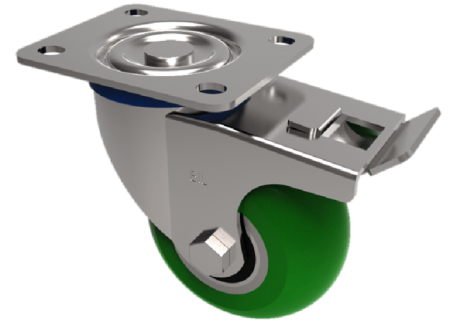


Soft Ergonomic Polyurethane Plate Swivel Castor Brake 150mm 500kg Load

Product code: BZPH150SRPTABJSWB



Presses steel swivel castor with a top plate fixing fitted with a round profile green ergonomic polyurethane on aluminium centred wheel with ball bearings with a total lock brake, Wheel diameter 150mm, tread width 50mm, overall height 188mm, top plate 135mm x 110mm, hole centres 105mm x 80/75mm. Load capacity 500kg.

Diameter (mm)	150
Castor Type	Swivel with Total Lock Brake
Fixing Option	Plate
Height (mm)	188
Wheel Material	Polyurethane on Aluminium
Colour / Shore Hardness	Green Ergonomic Polyurethane on Aluminium Rim / 85 Shore A
Temperature Resistance	-20 °C TO +80 °C
Bearing Type	Ball
Load Capacity (kg)	500
Tread (mm)	50
Swivel Radius (mm)	165
Plate Size (mm)	135 x 115
Hole Centres (mm)	105 x 80/75
Top Plate Thickness (mm)	4
Fork Thickness (mm)	4
To Suit Fixing Bolt (mm)	10