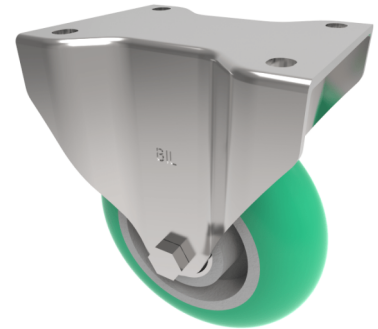


Soft Ergonomic Polyurethane Plate Fixed Castor 100mm 350kg Load

Product code: BZXPF100SRPTABJ

Pressed steel fixed castor with a top plate fixing fitted with a green ergonomic 85 shore A polyurethane round profile wheel with aluminium centre with ball bearings. Wheel diameter 100mm, tread width 50mm, overall height 140mm, plate size 105 mm x 86mm, hole centres 80/77mm x 60mm Load capacity 350kg.



Diameter (mm)	100
Castor Type	Fixed
Fixing Option	Plate
Height (mm)	140
Wheel Material	Polyurethane on Aluminium
Colour / Shore Hardness	Green Ergonomic Polyurethane on Aluminium Rim / 85 Shore A
Temperature Resistance	-20 °C TO +80 °C
Bearing Type	Ball
Load Capacity (kg)	350
Tread (mm)	50
Plate Size (mm)	105 x 86
Hole Centres (mm)	105 x 75/80
Top Plate Thickness (mm)	6
Fork Thickness (mm)	5
To Suit Fixing Bolt (mm)	10

BIL GROUP LTD

Porte Marsh Road, Calne, Wiltshire, SN11 9BW

Registered in England No: 2603821

VAT Reg: GB572705729

