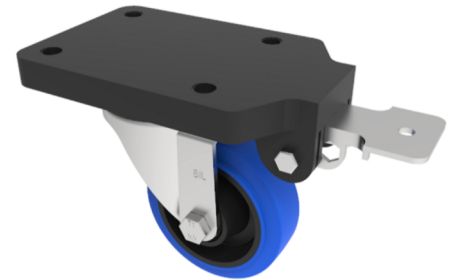


Soft Blue Rubber Swivel Brake Plate Castor 80mm 150kg

Product code: BZEH80SRNFPSWB



Pressed steel swivel castor fitted with a 65 shore A blue elastic rubber tyre wheel with a black nylon centre with a Plain Bore and a fixed position total lock brake. Wheel diameter 80mm, Tread width 35mm, Overall Height 125mm, Top Plate 180mm x 115mm, Hole Centres 105mm x 80mm, Load Capacity 150kg. REACH compliant also PAH-Free rubber to confirm to EU-directive 2005/69/EC

Fixing Option	Plate
Diameter (mm)	80
Load Capacity (kg)	150
Castor Type	Swivel with Fixed Position Total Lock Brake
Height (mm)	125
Wheel Material	Rubber on Nylon
Colour / Shore Hardness	Blue Elastic Rubber on Nylon Rim / 65 Shore A
Bearing Type	Plain
Tread (mm)	35
Fork Thickness (mm)	4
Temperature Resistance	-20 °C TO +60 °C
Plate Size (mm)	180 x 115
Hole Centres (mm)	105 x 80
Swivel Radius (mm)	164
Top Plate Thickness (mm)	18
To Suit Fixing Bolt (mm)	10

BIL GROUP LTD

Porte Marsh Road, Calne, Wiltshire, SN11 9BW

Registered in England No: 2603821

VAT Reg: GB572705729

