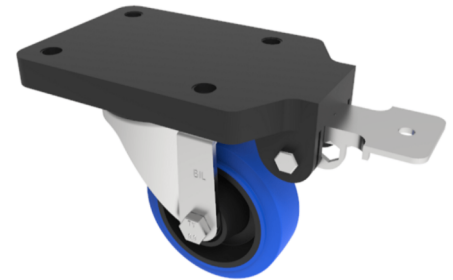


## Soft Blue Rubber Swivel Brake Plate Castor 100mm 200kg

**Product code: BZEH100SRNBFPSWB**



Pressed steel swivel castor with flat top plate fixing fitted with a blue 65 shore A elastic rubber tyre on black nylon centre with roller bearing and a fixed position total lock brake. Wheel diameter 100mm, tread width 36mm, overall height 144mm, top plate 180mm x 115mm, hole centres 105mm x 80mm Load capacity 250kg. REACH compliant also PAH-Free rubber to confirm to EU-directive 2005/69/EC

Fixing Option	Plate
Diameter (mm)	100
Load Capacity (kg)	250
Castor Type	Swivel with Fixed Position Total Lock Brake
Height (mm)	144
Wheel Material	Rubber on Nylon
Colour / Shore Hardness	Blue Elastic Rubber on Nylon Rim / 65 Shore A
Bearing Type	Roller
Tread (mm)	36
Fork Thickness (mm)	3
Temperature Resistance	-20 °C TO +60 °C
Plate Size (mm)	180 x 115
Hole Centres (mm)	105 x 80
Swivel Radius (mm)	164
Top Plate Thickness (mm)	18
To Suit Fixing Bolt (mm)	10

## BIL GROUP LTD

Porte Marsh Road, Calne, Wiltshire, SN11 9BW

Registered in England No: 2603821

VAT Reg: GB572705729

