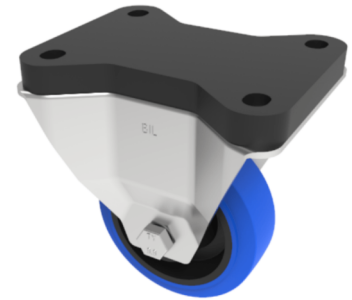


Soft Blue Rubber Fixed Plate Castor 100mm 200kg

Product code: BZEHF100SRNBFP

Pressed steel fixed castor with flat top plate fixing fitted with a blue 65 shore A elastic rubber tyre on black nylon centre with roller bearing. Wheel diameter 100mm, tread width 36mm, overall height 144mm, top plate 135mm x 105mm, hole centres 105mm x 80mm Load capacity 250kg. REACH compliant also PAH-Free rubber to confirm to EU-directive 2005/69/EC



| | |
|--------------------------|---|
| Fixing Option | Plate |
| Diameter (mm) | 100 |
| Load Capacity (kg) | 200 |
| Castor Type | Fixed |
| Height (mm) | 144 |
| Wheel Material | Rubber on Nylon |
| Colour / Shore Hardness | Blue Elastic Rubber on Nylon Rim / 65 Shore A |
| Bearing Type | Roller |
| Tread (mm) | 36 |
| Fork Thickness (mm) | 3 |
| Temperature Resistance | -20 °C TO +60 °C |
| Plate Size (mm) | 135 x 105 |
| Hole Centres (mm) | 105 x 80 |
| Top Plate Thickness (mm) | 18 |
| To Suit Fixing Bolt (mm) | 10 |

BIL GROUP LTD

Porte Marsh Road, Calne, Wiltshire, SN11 9BW

Registered in England No: 2603821

VAT Reg: GB572705729

