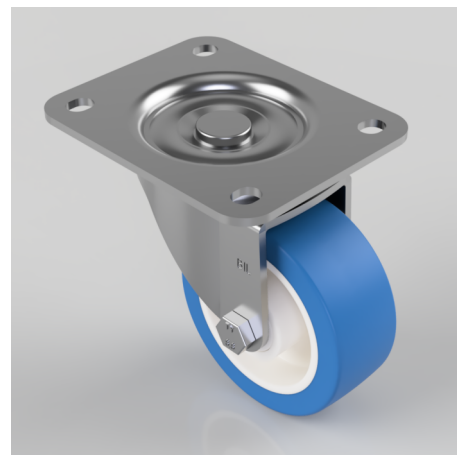


## Soft Blue Polyurethane Nylon Plate Swivel Castor 100mm 270kg Load

**Product code: BZPH100ENPB**

Pressed steel swivel castor with a top plate fixing fitted with a 82 shore A polyurethane tyre on white nylon centred wheel with a roller bearing. Wheel diameter 100mm, tread width 40mm, overall height 133mm, plate size 135mm x 110mm, hole centres 105mm x 80mm/75mm. Load capacity 300kg. Please note the tyre is flat and designed for floor protection but this may increase tractive resistance.



Diameter (mm)	100
Castor Type	Swivel
Fixing Option	Plate
Height (mm)	133
Wheel Material	Polyurethane on Nylon
Colour / Shore Hardness	Blue Polyurethane on NylonRim / 82 Shore A
Temperature Resistance	-30 °C TO +60 °C
Bearing Type	Roller
Load Capacity (kg)	300
Tread (mm)	40
Swivel Radius (mm)	91
Plate Size (mm)	135 x 110
Hole Centres (mm)	105 x 80/75
Top Plate Thickness (mm)	4
Fork Thickness (mm)	4
To Suit Fixing Bolt (mm)	10

## BIL GROUP LTD

Porte Marsh Road, Calne, Wiltshire, SN11 9BW

Registered in England No: 2603821

VAT Reg: GB572705729

