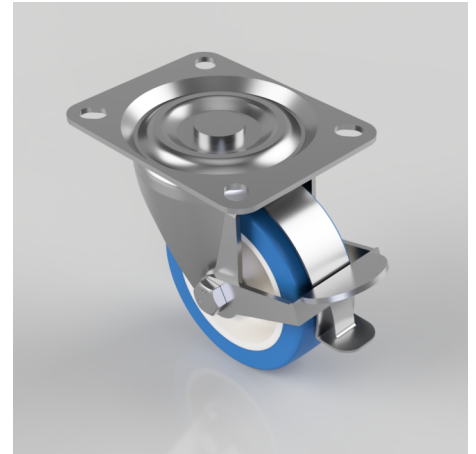


Soft Blue Polyurethane Nylon Plate Swivel Brake Castor 100mm 250kg Load

Product code: BZH100ENPBLPBR

Pressed steel swivel castor with a top plate fixing fitted with a blue 82 shore A polyurethane tyre on white nylon centre wheel with roller bearings and wheel brake. Wheel diameter 100mm, tread width 40mm, overall height 127mm, top plate 128mm x 102mm, hole centres 105mm x 80mm or 100mm x 76mm Load capacity 250kg. Please note the tyre is flat and designed for floor protection but this may increase tractive resistance.



Diameter (mm)	100
Castor Type	Swivel with Wheel Brake
Fixing Option	Plate
Height (mm)	127
Wheel Material	Polyurethane on Nylon
Colour / Shore Hardness	Blue Polyurethane on NylonRim / 82 Shore A
Temperature Resistance	-30 °C TO +60 °C
Bearing Type	Roller
Load Capacity (kg)	250
Tread (mm)	40
Plate Size (mm)	128 x 102
Hole Centres (mm)	100 x 76, 105 x 80
Top Plate Thickness (mm)	3
Fork Thickness (mm)	3
To Suit Fixing Bolt (mm)	10