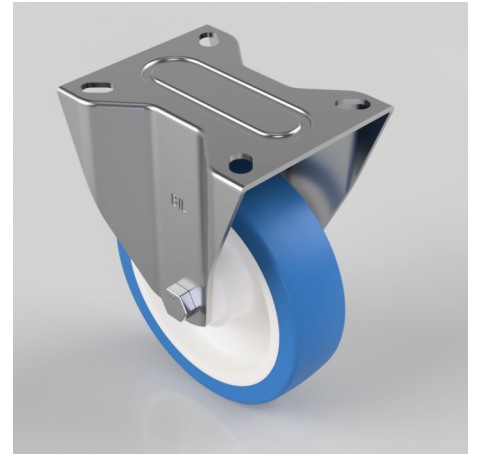


Soft Blue Polyurethane Nylon Plate Fixed Castor 150mm 270kg Load

Product code: BZMMF150ENP

Pressed steel fixed castor with a top plate fitted with a 82 shore A blue polyurethane tyre white nylon centred wheel with plain bore. Wheel diameter 150mm, tread width 40mm, overall height 190mm, top plate 140mm x 110mm, hole centres 105mm x 80mm. Load capacity 350kg.



Diameter (mm)	150
Castor Type	Fixed
Fixing Option	Plate
Height (mm)	190
Wheel Material	Polyurethane on Nylon
Colour / Shore Hardness	Blue Polyurethane on NylonRim / 82 Shore A
Temperature Resistance	-30 °C TO +60 °C
Bearing Type	Plain
Load Capacity (kg)	270
Tread (mm)	40
Plate Size (mm)	140 x 110
Hole Centres (mm)	105 x 80/75
Top Plate Thickness (mm)	3
Fork Thickness (mm)	3
To Suit Fixing Bolt (mm)	8

BIL GROUP LTD

Porte Marsh Road, Calne, Wiltshire, SN11 9BW

Registered in England No: 2603821

VAT Reg: GB572705729

