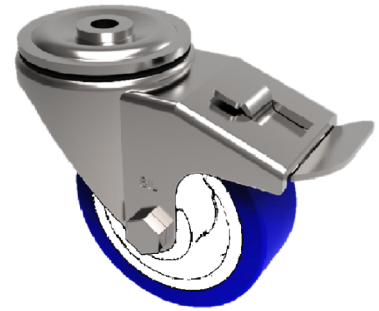


Soft Blue Polyurethane Nylon Bolt Hole Swivel Castor Brake 100mm 300kg

Product code: BZH100ENPBBH12SWB

Pressed steel swivel castor with a 12mm bolt hole fitted with a blue 82 shore A polyurethane tyre on white nylon centre wheel with roller bearings and total lock brake. Wheel diameter 100mm, tread width 40mm, overall height 128mm, Load capacity 300kg. Please note the tyre is flat and designed for floor protection but this may increase tractive resistance.



Diameter (mm)	100
Castor Type	Swivel with Total Lock Brake
Fixing Option	Bolt Hole
Height (mm)	128
Wheel Material	Polyurethane on Nylon
Colour / Shore Hardness	Blue Polyurethane on Nylon Rim / 82 Shore A
Temperature Resistance	-30 °C TO +60 °C
Bearing Type	Roller
Load Capacity (kg)	300
Tread (mm)	40
Swivel Radius (mm)	90
Head Dia (mm)	76
Fork Thickness (mm)	4
To Suit Fixing Bolt (mm)	12

BIL GROUP LTD

Porte Marsh Road, Calne, Wiltshire, SN11 9BW

Registered in England No: 2603821

VAT Reg: GB572705729

