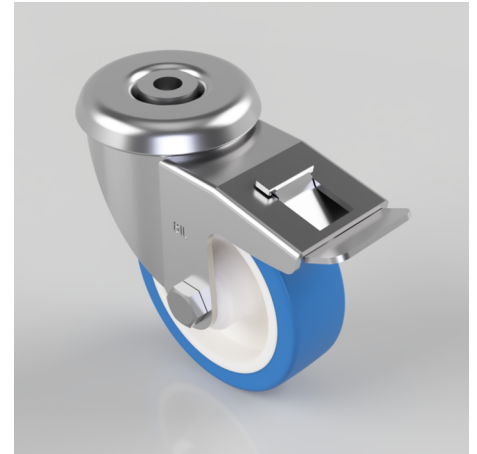


Soft Blue Polyurethane Nylon Bolt Hole Swivel Castor Brake 100mm 250kg

Product code: SSEH100ENPBH12SWB

Grade 304 Pressed stainless steel swivel castor with a 12mm bolt hole fitted with a 82 shore A polyurethane tyred white nylon centred wheel with a Plain Bore and total lock brake. Wheel diameter 100mm, tread width 32mm, overall height 128mm, Load capacity 250kg



Diameter (mm)	100
Fixing Option	Bolt Hole
Castor Type	Swivel with Total Lock Brake
Height (mm)	128
Wheel Material	Polyurethane on Nylon
Colour / Shore Hardness	Blue Polyurethane on NylonRim / 82 Shore A
Bearing Type	Plain
Tread (mm)	32
Fork Thickness (mm)	3
To Suit Fixing Bolt (mm)	12
Load Capacity (kg)	250
Temperature Resistance	-30 °C TO +60 °C
Head Dia (mm)	78
Swivel Radius (mm)	115

BIL GROUP LTD

Porte Marsh Road, Calne, Wiltshire, SN11 9BW

Registered in England No: 2603821

VAT Reg: GB572705729

