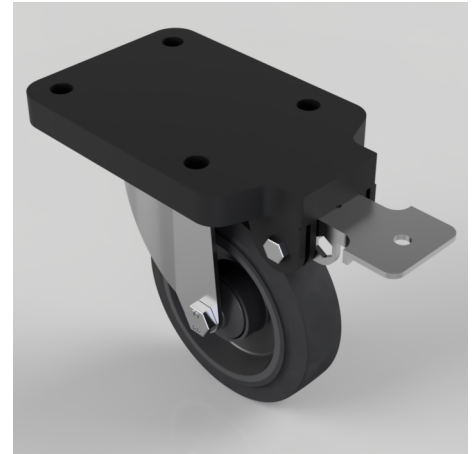


Soft Black Rubber Swivel Brake Plate Castor 125mm 250kg

Product code: BZEH125SRNBJFPSWB/BLK

Pressed steel swivel castor with flat top plate fixing fitted with a 65 Shore A black elastic rubber tyre on black nylon centre wheel with single ball bearing and retaining caps and fixed position total lock brake. Wheel diameter 125mm, tread width 36mm, overall height 170mm, plate size 180mm x 115mm, hole centres 105mm x 80mm. Load capacity 250kg. REACH compliant also PAH-Free rubber to confirm to EU-directive 2005/69/EC



Fixing Option	Plate
Diameter (mm)	125
Load Capacity (kg)	250
Castor Type	Swivel with Fixed Position Total Lock Brake
Height (mm)	170
Wheel Material	Rubber on Nylon
Colour / Shore Hardness	Black Elastic Rubber on Nylon Rim / 65 Shore A
Bearing Type	Ball
Tread (mm)	36
Fork Thickness (mm)	3
Temperature Resistance	-20 °C TO +60 °C
Plate Size (mm)	180 x 115
Hole Centres (mm)	105 x 80
Swivel Radius (mm)	164
Top Plate Thickness (mm)	18
To Suit Fixing Bolt (mm)	10

BIL GROUP LTD

Porte Marsh Road, Calne, Wiltshire, SN11 9BW

Registered in England No: 2603821

VAT Reg: GB572705729

