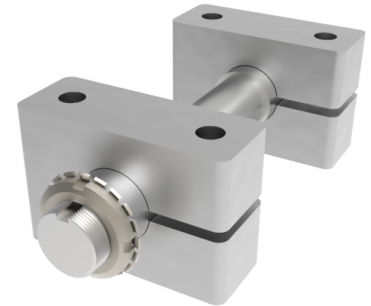


Single Mount Steel Axle Mounting Diameter 30mm 3300kg Load

Product code: SMA30

POA Single axle assembly, to suit axle diameter 30mm, total length 225mm, minimum axle hub length 51mm, maximum axle length 80mm, thread diameter 35mm, fixing block width 105mm, Fixing hole centres 70mm, load capacity 3300kg

****MANUFACTURED TO ORDER****



| | |
|------------------------------|------|
| To suit axle diameter (mm) | 30 |
| Total length (mm) | 225 |
| Axle Shoulder Length (mm) | 65 |
| Minimum Axle Hub Length (mm) | 51 |
| Maximum Axle Hub Length (mm) | 80 |
| Maximum Block Position (mm) | 25 |
| Shoulder Diameter (mm) | 35 |
| Fixing Block Length (mm) | 105 |
| Fixing hole centres (mm) | 70 |
| Fixing Bolt (mm) | 12 |
| Fixing block width (mm) | 40 |
| Load Capacity (kg) | 3300 |

BIL GROUP LTD

Porte Marsh Road, Calne, Wiltshire, SN11 9BW

Registered in England No: 2603821

VAT Reg: GB572705729

