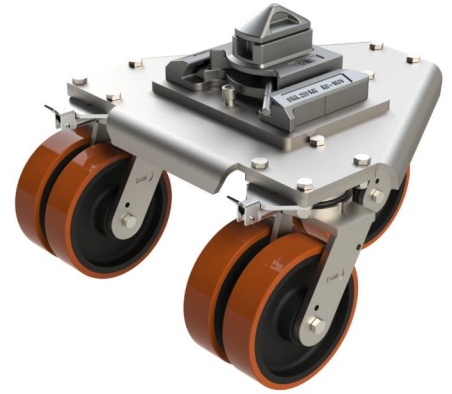


## Set of 4 x 200mm ISO Container Castor. Load Capacity per set (4 x castors) 12,000kg

**Product code: ISO2X200PTBJDLSK/SET**

ISO Container Castor set. Twin wheel 200mm diameter. Tread width 2 x 50mm. Height to ISO fixing 345mm. Fitted with directional locks. Load capacity per set (4 x castors) 12,000kg

**\*\*MANUFACTURED TO ORDER\*\***



Height (mm)	345
Tread (mm)	2 x 50
Diameter (mm)	200
Load Capacity (kg)	12000
Bearing Type	Ball
Fixing Option	ISO fixing
Castor Type	Swivel with Directional Locks
Wheel Material	Polyurethane on Cast Iron
Colour / Shore Hardness	Brown Polyurethane on Cast Iron Rim / 95 Shore A
Temperature Resistance	-30 °C TO +80 °C

### BIL GROUP LTD

Porte Marsh Road, Calne, Wiltshire, SN11 9BW

Registered in England No: 2603821

VAT Reg: GB572705729

