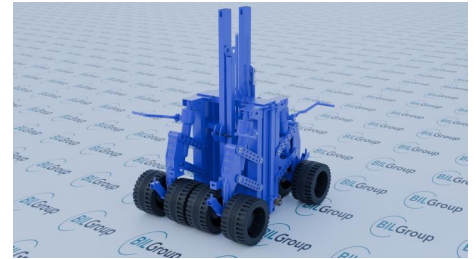


Set of 4 Hydraulic Lifting Container Castors 550mm 15,000kg Set Load

Product code: ISO15HLC/SET



- Attach easily to DIN 1161 ISO-Corners
- Enables easy movement, even in narrow places and with restricted heights
- Moves your container in any direction
- Reinforced tow bar to allow for towing
- 450mm lift
- 15,000kg load capacity (per set)
- Designed in accordance to NATO and Aerospace standards

****MANUFACTURED TO ORDER DELIVERY TIME 16 WEEKS****

| | |
|-------------------------|--|
| Bearing Type | Ball |
| Castor Type | Swivel |
| Colour / Shore Hardness | Black Rubber on Steel Rim / 85 Shore A |
| Diameter (mm) | 550 |
| Fixing Option | ISO fixing |
| Tread (mm) | 2 x 150 |
| Wheel Material | Rubber on Steel |
| Load Capacity (kg) | 15000 Per Set |

BIL GROUP LTD

Porte Marsh Road, Calne, Wiltshire, SN11 9BW

Registered in England No: 2603821

VAT Reg: GB572705729

