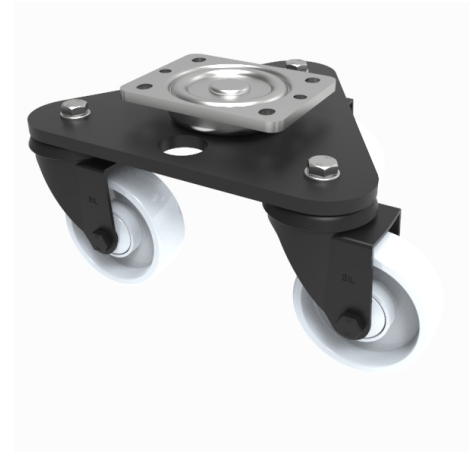


## Scenery Skate Nylon Plate Swivel Castor 50mm 450kg Load

**Product code: BLKSKM50NYBJ**

Central medium duty white zinc plated swivel head, mounted on a black painted triangular base plate fitted with 3 pressed steel black painted swivel castors fitted with 50mm white nylon wheels with ball bearings. Overall height 109mm, Plate size 138 x 109mm, hole centres 105 x 80mm Load capacity 450kg.



Diameter (mm)	50
Castor Type	Swivel
Fixing Option	Plate
Height (mm)	109
To Suit Fixing Bolt (mm)	10
Bearing Type	Ball
Swivel Radius (mm)	180
Wheel Material	Nylon
Colour / Shore Hardness	White Nylon
Tread (mm)	28
Temperature Resistance	-30 °C TO +80 °C
Load Capacity (kg)	450
Plate Size (mm)	135 x 110
Hole Centres (mm)	105 x 80/75

## BIL GROUP LTD

Porte Marsh Road, Calne, Wiltshire, SN11 9BW

Registered in England No: 2603821

VAT Reg: GB572705729

