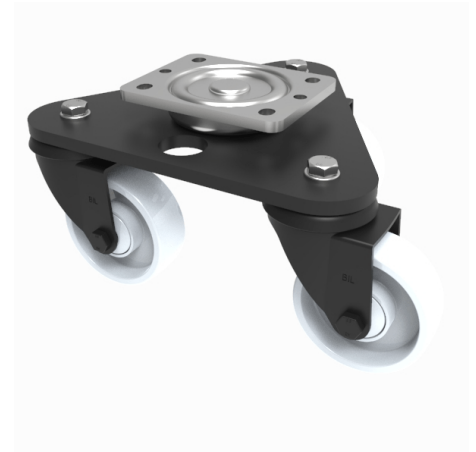


Scenery Skate Nylon Plate Swivel Castor 100mm 460kg Load

Product code: BLKSKM100NYBJ

Central medium duty white zinc plated swivel head mounted on a black painted triangular base plate fitted with 3 pressed steel black painted swivel castors fitted with a white nylon wheel with a single ball bearing and retaining caps. Wheel diameter 100mm, tread width 36mm, overall height 164mm. Load capacity 460kg.



Diameter (mm)	100
Castor Type	Swivel
Fixing Option	Plate
Height (mm)	164
To Suit Fixing Bolt (mm)	10
Bearing Type	Ball
Swivel Radius (mm)	212
Wheel Material	Nylon
Colour / Shore Hardness	White Nylon
Tread (mm)	36
Temperature Resistance	-30 °C TO +80 °C
Load Capacity (kg)	460
Plate Size (mm)	135 x 110
Hole Centres (mm)	105 x 80/75

BIL GROUP LTD

Porte Marsh Road, Calne, Wiltshire, SN11 9BW

Registered in England No: 2603821

VAT Reg: GB572705729

