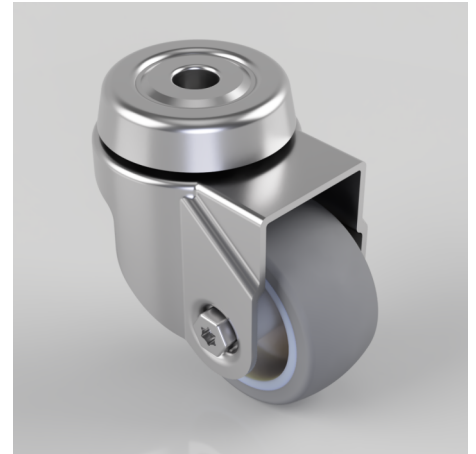


Rubber Swivel Castor Bolthole 50mm 50kg

Product code: SSRA50GRBH10

Grade 304 Stainless steel swivel castor with a 10mm bolt hole fitted with a grey rubber tyred polypropylene centred wheel with plain bore wheel. Wheel diameter 50mm, tread width 24mm, overall height 74mm, Load capacity 50kg.



Diameter (mm)	50
Fixing Option	Bolt Hole
Castor Type	Swivel
Height (mm)	74
Wheel Material	Rubber on Polypropylene
Colour / Shore Hardness	Grey Rubber on Polypropylene Rim / 87 Shore A
Bearing Type	Plain
Tread (mm)	24
Fork Thickness (mm)	1.8
To Suit Fixing Bolt (mm)	10
Load Capacity (kg)	50
Temperature Resistance	-15 °C TO +80 °C
Head Dia (mm)	50
Swivel Radius (mm)	50