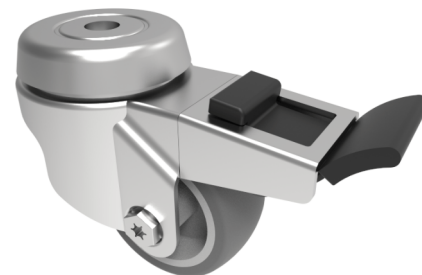


Rubber Swivel Castor Bolt Hole Brake 125mm 80kg

Product code: BZRA125GRBJBH10SWB



POA Pressed steel swivel castor with a 10mm bolt fixing fitted with a grey thermoplastic rubber tyre on polypropylene centred wheel with a ball bearing and a total lock brake. Wheel diameter 125mm, tread width 24mm, overall height 149mm, Load capacity 80kg.

Diameter (mm)	125
Fixing Option	Bolt Hole
Castor Type	Swivel with Total Lock Brake
Head Dia (mm)	46
Height (mm)	149
Bearing Type	Ball
Swivel Radius (mm)	106
Wheel Material	Rubber on Polypropylene
Colour / Shore Hardness	Grey Rubber on Polypropylene Rim / 82 Shore A
Fork Thickness (mm)	1.8
Temperature Resistance	-15 °C TO +80 °C
To Suit Fixing Bolt (mm)	10
Tread (mm)	24
Load Capacity (kg)	80

BIL GROUP LTD

Porte Marsh Road, Calne, Wiltshire, SN11 9BW

Registered in England No: 2603821

VAT Reg: GB572705729

