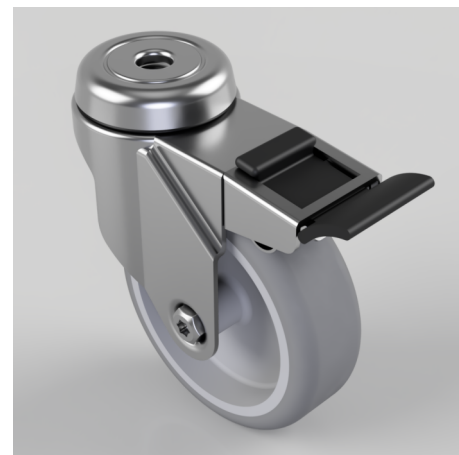


Rubber Swivel Castor Bolt Hole Brake 100mm 90kg

Product code: BZM100GRBJBH12SWB

Pressed steel swivel castor with a 12mm bolt hole fixing fitted with a grey thermoplastic rubber tyre on polypropylene centred wheel with ball bearing and a total lock brake. Wheel diameter 100mm, tread width 32mm, overall height 132mm, Load capacity 90kg.



| | |
|--------------------------|---|
| Diameter (mm) | 100 |
| Fixing Option | Bolt Hole |
| Castor Type | Swivel with Total Lock Brake |
| Head Dia (mm) | 57 |
| Height (mm) | 132 |
| Bearing Type | Ball |
| Swivel Radius (mm) | 107 |
| Wheel Material | Rubber on Polypropylene |
| Colour / Shore Hardness | Grey Rubber on Polypropylene Rim / 82 Shore A |
| Fork Thickness (mm) | 2 |
| Temperature Resistance | -15 °C TO +80 °C |
| To Suit Fixing Bolt (mm) | 12 |
| Tread (mm) | 32 |
| Load Capacity (kg) | 90 |

BIL GROUP LTD

Porte Marsh Road, Calne, Wiltshire, SN11 9BW

Registered in England No: 2603821

VAT Reg: GB572705729

