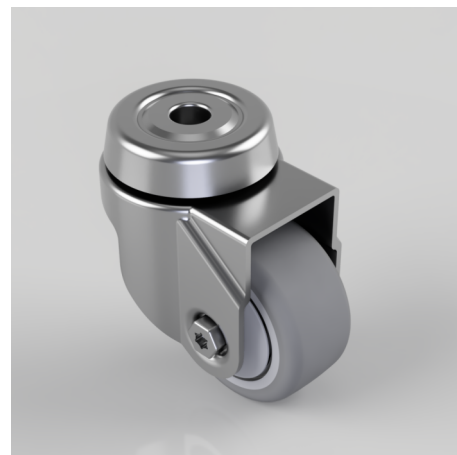


Rubber Swivel Castor Bolt Hole 50mm 50kg

Product code: BZRA50GRBJBH10

Pressed steel swivel castor with a bolt hole fixing fitted with a grey thermoplastic rubber tyre on polypropylene centred wheel with ball bearing and caps. Wheel diameter 50mm, tread width 24mm, overall height 74mm, bolt hole 10mm with a Load capacity 50kg.



| | |
|--------------------------|---|
| Diameter (mm) | 50 |
| Fixing Option | Bolt Hole |
| Castor Type | Swivel |
| Head Dia (mm) | 46 |
| Height (mm) | 74 |
| Bearing Type | Ball |
| Swivel Radius (mm) | 50 |
| Wheel Material | Rubber on Polypropylene |
| Colour / Shore Hardness | Grey Rubber on Polypropylene Rim / 82 Shore A |
| Fork Thickness (mm) | 1.8 |
| Temperature Resistance | -15 °C TO +80 °C |
| To Suit Fixing Bolt (mm) | 10 |
| Tread (mm) | 24 |
| Load Capacity (kg) | 50 |

BIL GROUP LTD

Porte Marsh Road, Calne, Wiltshire, SN11 9BW

Registered in England No: 2603821

VAT Reg: GB572705729

