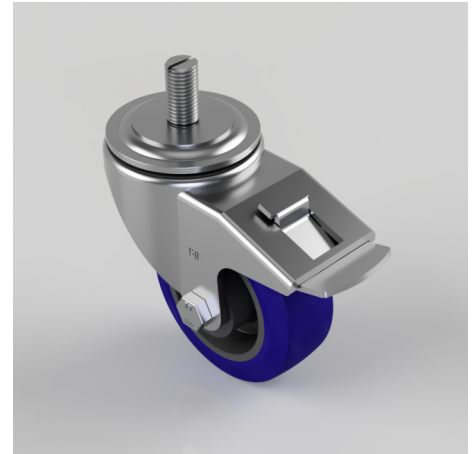


## Rubber Stem Swivel Castor Brake 100mm 250kg Load

**Product code: BZH100RNBSWBST**

Pressed steel swivel castor fitted with a blue 75 shore A elastic rubber tyre on black nylon centred wheel with a roller bearing and fitted 16mm x 30mm threaded stem and total lock brake. Wheel diameter 100mm, tread width 38mm, overall height 128mm. Load capacity 250kg



Diameter (mm)	100
Castor Type	Swivel with Total Lock Brake
Fixing Option	Stem
Height (mm)	128
Wheel Material	Rubber on Nylon
Colour / Shore Hardness	Blue Rubber on Nylon Rim / 75 Shore A
Temperature Resistance	-20 °C TO +60 °C
Bearing Type	Roller
Load Capacity (kg)	250
Tread (mm)	38
Swivel Radius (mm)	120
Head Dia (mm)	76
To Suit Fixing Bolt (mm)	M16 X 30

## BIL GROUP LTD

Porte Marsh Road, Calne, Wiltshire, SN11 9BW

Registered in England No: 2603821

VAT Reg: GB572705729

