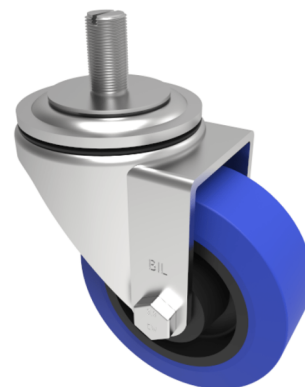


Rubber Stem Swivel Castor 125mm 250kg Load

Product code: BZH125SRNBJST

Pressed steel swivel castor with a 16mm x 30mm stem fixing fitted with a blue 65 shore A elastic rubber tyre on a black nylon centred wheel with a ball bearing. Wheel diameter 125mm, tread width 36mm, overall height 156mm. Load capacity 250kg. REACH compliant also PAH-Free rubber to confirm to EU-directive 2005/69/EC



Diameter (mm)	125
Castor Type	Swivel
Fixing Option	Stem
Height (mm)	155
Wheel Material	Rubber on Nylon
Colour / Shore Hardness	Blue Elastic Rubber on Nylon Rim / 65 Shore A
Temperature Resistance	-30 °C TO +80 °C
Bearing Type	Ball
Load Capacity (kg)	250
Tread (mm)	36
Swivel Radius (mm)	104
Head Dia (mm)	76
To Suit Fixing Bolt (mm)	M16 X 30

BIL GROUP LTD

Porte Marsh Road, Calne, Wiltshire, SN11 9BW

Registered in England No: 2603821

VAT Reg: GB572705729

