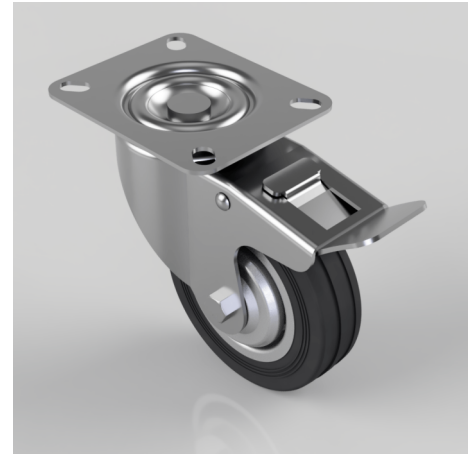


Rubber Plate Swivel Braked 100mm Load 60kg

Product code: 100RMBSWB

Pressed steel swivel castor with a top plate fixing fitted with black rubber tyred on pressed steel centred wheel with a roller bearing Bore and total lock brake. Wheel diameter 100mm, tread width 26mm, overall height 128mm, top plate 102mm x 84mm, hole centres 80mm x 60mm. Load capacity 60kg.



Diameter (mm)	100
Fixing Option	Plate
Castor Type	Swivel with Total Lock Brake
Height (mm)	128
Bearing Type	Roller
Swivel Radius (mm)	118
Wheel Material	Rubber on Steel
Colour / Shore Hardness	Black Rubber on Steel Rim / 85 Shore A
Fork Thickness (mm)	2
Temperature Resistance	-20 °C TO +60 °C
To Suit Fixing Bolt (mm)	8
Tread (mm)	26
Plate Size (mm)	102 x 84
Hole Centres (mm)	80 X 60
Top Plate Thickness (mm)	2

BIL GROUP LTD

Porte Marsh Road, Calne, Wiltshire, SN11 9BW

Registered in England No: 2603821

VAT Reg: GB572705729

