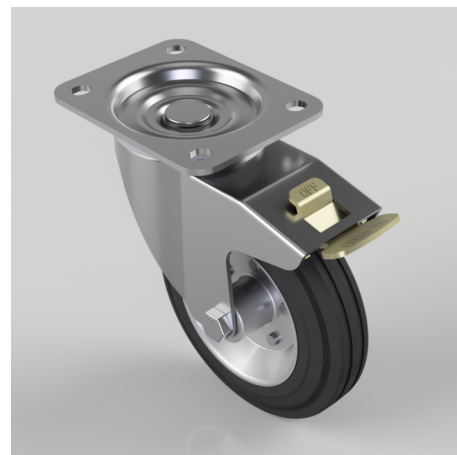


Rubber on Pressed Steel Plate Swivel Waste Bin Castor Brake 160mm 135kg Load

Product code: V42L160SRRP05

Pressed steel swivel waste bin castor with a top plate fixing fitted with black rubber on pressed steel centred wheel with a roller bearing and total lock brake. Wheel diameter 160mm, tread width 40mm, overall height 198mm, top plate 135mm x 110mm, hole centres 105mm x 80/75mm. Load capacity 135kg.



Diameter (mm)	160
Castor Type	Swivel with Total Lock Brake
Fixing Option	Plate
Height (mm)	198
Wheel Material	Rubber on Pressed Steel
Colour / Shore Hardness	Black Rubber on Pressed Steel Rim / 85° Shore A
Bearing Type	Roller
Load Capacity (kg)	135
Tread width (mm)	40
Swivel Radius (mm)	148
Plate Size (mm)	136 x 110
Hole Centres (mm)	105 x 80/75
Top Plate Thickness (mm)	4
Fork Thickness (mm)	3
To Suit Fixing Bolt (mm)	10
Brand	Varley
Temperature Resistance	-20 °C TO +60 °C

BIL GROUP LTD

Porte Marsh Road, Calne, Wiltshire, SN11 9BW

Registered in England No: 2603821

VAT Reg: GB572705729

