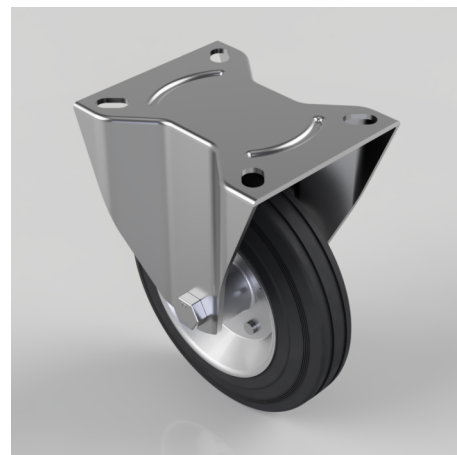


## Rubber on Pressed Steel Plate Fixed Castor 160mm 135kg Load

**Product code: V41Q160SRRP05**

Pressed steel fixed castor with a top plate fixing fitted with black rubber on pressed steel centred wheel with a roller bearing. Wheel diameter 160mm, tread width 37.5mm, overall height 195mm, top plate 135mm x 110mm, hole centres 105mm x 80mm. Load capacity 135kg.



Diameter (mm)	160
Castor Type	Fixed
Fixing Option	Plate
Height (mm)	195
Wheel Material	Rubber on Pressed Steel
Colour / Shore Hardness	Black Rubber on Pressed Steel Rim / 85° Shore A
Temperature Resistance	-20°C to +60°C
Bearing Type	Roller
Load Capacity (kg)	135
Tread width (mm)	38
Plate Size (mm)	135 x 110
Hole Centres (mm)	105 x 80
Top Plate Thickness (mm)	3
Fork Thickness (mm)	3
To Suit Fixing Bolt (mm)	10
Brand	Varley

## BIL GROUP LTD

Porte Marsh Road, Calne, Wiltshire, SN11 9BW

Registered in England No: 2603821

VAT Reg: GB572705729

