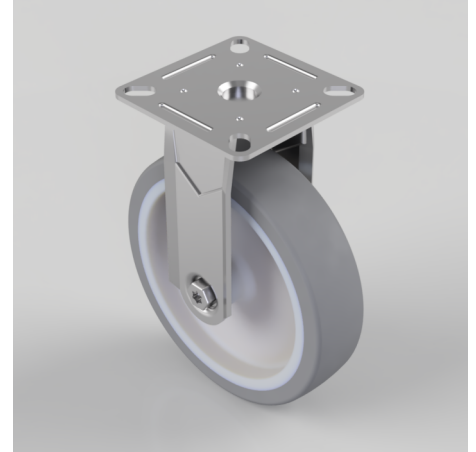


## Rubber Fixed Castor Plate 100mm 70kg

**Product code: SSRAF100GR**

Grade 304 Pressed stainless steel swivel castor with a flat plate fitted with a grey thermoplastic rubber tyre on polypropylene centred wheel with a Plain Bore and a total lock brake. Wheel diameter 100mm, tread width 24mm, overall height 124mm. plate size 60mm x 60mm, hole centres 49mm x 49mm or 43mm x 43mm Load capacity 70kg.

**\*\*MANUFACTURED TO ORDER\*\***



Diameter (mm)	100
Fixing Option	Plate
Castor Type	Fixed
Height (mm)	124
Wheel Material	Rubber on Polypropylene
Colour / Shore Hardness	Grey Rubber on Polypropylene Rim / 87 Shore A
Bearing Type	Plain
Tread (mm)	24
Fork Thickness (mm)	1.8
To Suit Fixing Bolt (mm)	6
Load Capacity (kg)	70
Temperature Resistance	-15 °C TO +80 °C
Plate Size (mm)	60 x 60
Hole Centres (mm)	49/43 x 49/43
Top Plate Thickness (mm)	1.8

## BIL GROUP LTD

Porte Marsh Road, Calne, Wiltshire, SN11 9BW

Registered in England No: 2603821

VAT Reg: GB572705729

