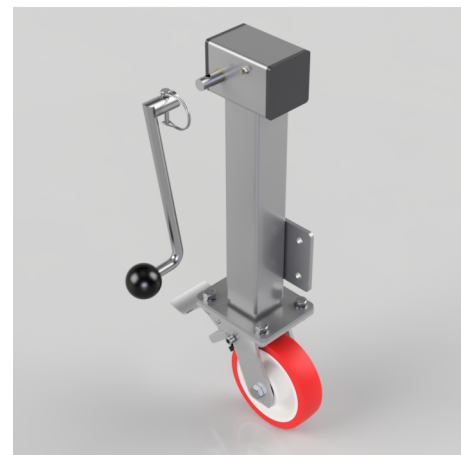


## Removable Handle Polyurethane Nylon Plate Swivel Castor Brake Locking Castor 150mm 500kg Load

**Product code: JAZHS150NPBJSWBRH**

Side winding jacking unit ( removable handle ) with maximum lift of 200mm fitted with a fabricated swivel castor with a top plate fixing fitted with a red polyurethane tyre on a white nylon centred wheel with ball bearing bore and a total lock brake. Wheel diameter 150mm, tread width 40mm, maximum Load for the complete unit is capacity 500kg. Please note Jacking castors are rated on a different principal to other castors and we recommend the total lifted load is divided over just 2 jacking units. For other dimensions please refer to the BIL catalogue or request a drawing. When jacked up to the height please be aware of any obstacles as a sudden shock could result in the inner square tube bending around the outer tube. Please note BIL do not recommend brakes on jacking castors. DO NOT OVERWIND Handle excessively more than what is needed as this will cause the pin in the gearbox to shear. (This is a safety precaution against over loading the unit)



|                          |  |
|--------------------------|--|
| Diameter (mm)            | 150  |
| Castor Height (mm)       | 190  |
| Castor Type              | Swivel with Total Lock Brake               |
| Swivel Radius (mm)       | 145  |
| Fixing Option            | Plate                                      |
| Bearing Type             | Ball                                       |
| To Suit Fixing Bolt (mm) | 10   |
| Wheel Material           | Polyurethane on Nylon                      |
| Colour / Shore Hardness  | Red Polyurethane on Nylon Rim / 96 Shore A |
| Temperature Resistance   | -20 °C TO +70 °C                           |
| Load Capacity (kg)       | 500  |
| Tread (mm)               | 40   |
| Height (mm)              | 600/800                                    |
| Lifting Stroke (mm)      | 200  |
| Handle Option            | Removable                                  |

## BIL GROUP LTD

Porte Marsh Road, Calne, Wiltshire, SN11 9BW

Registered in England No: 2603821

VAT Reg: GB572705729

