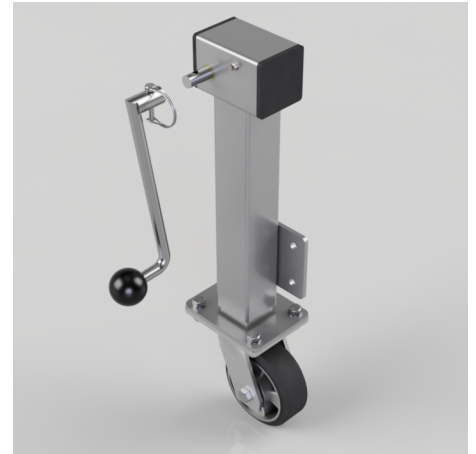


Removable Handle Elastic Rubber on Aluminium Plate Swivel Castor 125mm 270kg Load

Product code: JAZHS125ERBJRH

Side winding jacking unit (removable handle) with maximum lift of 200mm fitted with a Fabricated swivel castor with a top plate fixing fitted with a black high elastic natural 65 shore A rubber tyre aluminium centred wheel with ball bearings. Wheel diameter 125mm, tread width 50mm, Load for the complete unit is capacity 270kg. Please note Jacking castors are rated on a different principal to other castors and we recommend the total lifted load is divided over just 2 jacking units. for other dimensions please refer to the BIL catalogue or request a drawing. When jacked up to the height please be aware of any obstacles as a sudden shock could result in the inner square tube bending around the outer tube. REACH compliant also PAH-Free rubber to confirm to EU-directive 2005/69/EC DO NOT OVERWIND Handle excessively more than what is needed as this will cause the pin in the gearbox to shear. (This is a safety precaution against over loading the unit)



Diameter (mm)	125
Castor Height (mm)	165
Castor Type	Swivel
Swivel Radius (mm)	101
Fixing Option	Plate
Bearing Type	Ball
To Suit Fixing Bolt (mm)	10
Wheel Material	Rubber on Aluminium
Colour / Shore Hardness	Black Elastic Rubber on Aluminium Rim / 65 Shore A
Temperature Resistance	-30 °C TO +80 °C
Load Capacity (kg)	270
Tread (mm)	50
Height (mm)	572 / 772
Lifting Stroke (mm)	200
Handle Option	Removable

BIL GROUP LTD

Porte Marsh Road, Calne, Wiltshire, SN11 9BW

Registered in England No: 2603821

VAT Reg: GB572705729

