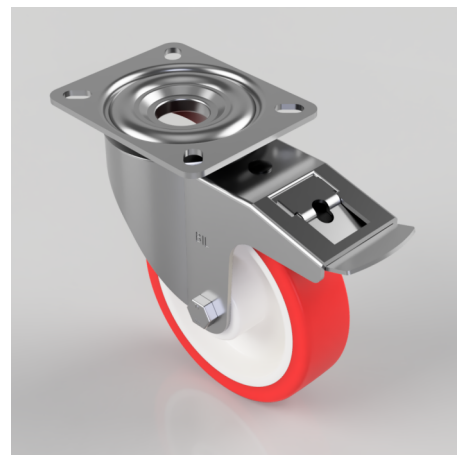


Pressed Steel Swivel Castor With Brake 150mm 350kg Load

Product code: BZMM150LNPBSWB

Pressed steel swivel castor with a top plate fixing fitted with a red polyurethane white nylon centred wheel with a roller bearing and total lock brake. Wheel diameter 150mm, tread width 40mm, overall height 190mm, top plate 135mm x 110mm, hole centres 105mm x 80mm. Load capacity 350kg.



Diameter (mm)	150
Castor Type	Swivel with Total Lock Brake
Fixing Option	Plate
Height (mm)	190
Wheel Material	Polyurethane on Nylon
Bearing Type	Roller
Load Capacity (kg)	350
Tread (mm)	40
Plate Size (mm)	135 x 110
Hole Centres (mm)	105 x 80
Swivel Radius (mm)	128
Colour / Shore Hardness	Red Polyurethane on Nylon Rim / 96 Shore A
Fork Thickness (mm)	3
Temperature Resistance	-20 °C TO +70 °C
To Suit Fixing Bolt (mm)	10
Top Plate Thickness (mm)	4

BIL GROUP LTD

Porte Marsh Road, Calne, Wiltshire, SN11 9BW

Registered in England No: 2603821

VAT Reg: GB572705729

