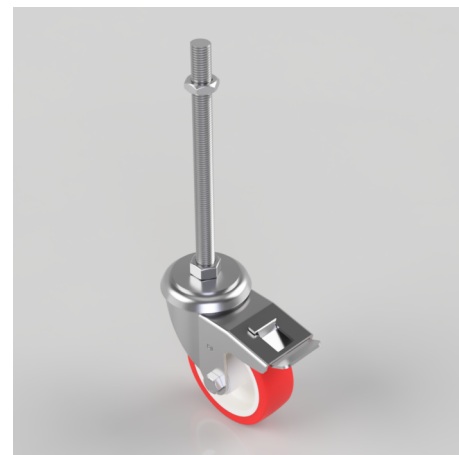


## Polyurethane Swivel Castor Brake 100mm 250kg Load

**Product code: SSEH100NPBSWBM16X200**

Grade 304 Pressed stainless steel swivel castor with with a M16 x 200mm adjustable stem fitted with a red polyurethane tyre on white nylon centred wheel with roller bearing and total lock brake. Wheel diameter 100mm, tread width 34mm, overall height 128mm. Load capacity 250kg.



Bearing Type	Roller
Fixing Option	Bolt Hole, Stem
Height (mm)	128
Castor Material	Stainless Steel
Castor Type	Swivel with Total Lock Brake
Swivel Radius (mm)	115
Load Capacity (kg)	250
Thread Size	M16 x 200mm
Tread (mm)	33
Diameter (mm)	100
Wheel Material	Polyurethane on Nylon
Colour / Shore Hardness	Red Polyurethane on Nylon Rim / 96 Shore A
Fork Thickness (mm)	3
Temperature Resistance	-20 °C TO +70 °C
Head Dia (mm)	76

## BIL GROUP LTD

Porte Marsh Road, Calne, Wiltshire, SN11 9BW

Registered in England No: 2603821

VAT Reg: GB572705729

