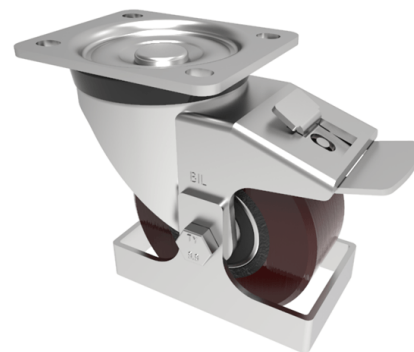


Polyurethane Plate Swivel Castor Brake Footguard 125mm 400kg load

Product code: BZH125PTBJSWBFG

Pressed steel swivel castor with a top plate fixing fitted with a brown polyurethane tyre on a cast iron centred wheel with ball bearings, total lock brake and footguard. Wheel diameter 125mm, tread width 40mm, overall height 155mm, top plate 105mm x 86mm, hole centres 80mm x 60mm. Load capacity 400kg.



Height (mm)	155
Tread (mm)	40
To Suit Fixing Bolt (mm)	8
Bearing Type	Ball
Diameter (mm)	125
Wheel Material	Polyurethane on Cast Iron
Fixing Option	Plate
Castor Type	Swivel with Total Lock Brake
Load Capacity (kg)	400
Colour / Shore Hardness	Brown Polyurethane on Cast Iron Rim / 94 Shore A
Swivel Radius (mm)	125
Plate Size (mm)	105 x 86
Hole Centres (mm)	80 X 60
Fork Thickness (mm)	4
Top Plate Thickness (mm)	4
Temperature Resistance	-20 °C TO +80 °C

BIL GROUP LTD

Porte Marsh Road, Calne, Wiltshire, SN11 9BW

Registered in England No: 2603821

VAT Reg: GB572705729

