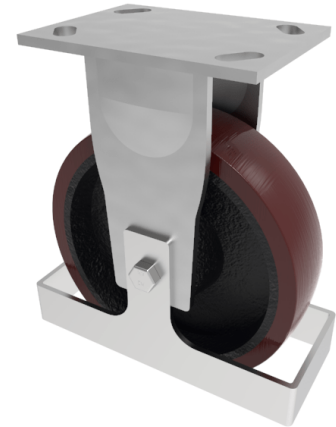


Polyurethane Plate Fixed Castor Footguard 200mm 1000kg load

Product code: BZKF200PTBJFG

Fabricated 6mm steel fixed castor with a top plate fixing fitted with a polyurethane tyred cast iron centred wheel with ball bearings and footguard. Wheel diameter 200mm, tread width 50mm, overall height 250mm, top plate 150mm x 110mm, hole centres 105mm x 80mm or 121mm x 59mm. Load capacity 1000kg.



Height (mm)	250
Tread (mm)	50
To Suit Fixing Bolt (mm)	12
Bearing Type	Ball
Diameter (mm)	200
Wheel Material	Polyurethane on Cast Iron
Fixing Option	Plate
Castor Type	Fixed
Load Capacity (kg)	1000
Colour / Shore Hardness	Brown Polyurethane on Cast Iron Rim / 94 Shore A
Plate Size (mm)	150 x 110
Hole Centres (mm)	105/121 x 80/59
Fork Thickness (mm)	6
Top Plate Thickness (mm)	7.5
Temperature Resistance	-20 °C TO +80 °C

BIL GROUP LTD

Porte Marsh Road, Calne, Wiltshire, SN11 9BW

Registered in England No: 2603821

VAT Reg: GB572705729

