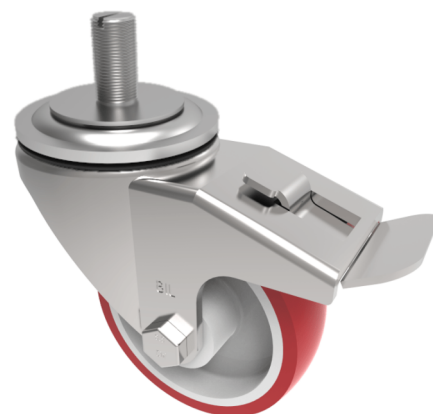


Polyurethane on Nylon Stem Swivel Castor Brake 125mm 250kg Load

Product code: BZH125NPBJSWBST

Pressed steel swivel castor with a 16mm x 30mm stem fixing fitted with a red polyurethane tyre on white nylon centred wheel with a ball bearing and total lock brake. Wheel diameter 125mm, tread width 40mm, overall height 156mm. Load capacity 250kg.



Diameter (mm)	125
Castor Type	Swivel with Total Lock Brake
Fixing Option	Stem
Height (mm)	155
Wheel Material	Polyurethane on Nylon
Colour / Shore Hardness	Red Polyurethane on Nylon Rim / 96 Shore A
Temperature Resistance	-20 °C TO +70 °C
Bearing Type	Ball
Load Capacity (kg)	250
Tread (mm)	40
Swivel Radius (mm)	125
Head Dia (mm)	76
To Suit Fixing Bolt (mm)	M16 X 30

BIL GROUP LTD

Porte Marsh Road, Calne, Wiltshire, SN11 9BW

Registered in England No: 2603821

VAT Reg: GB572705729

