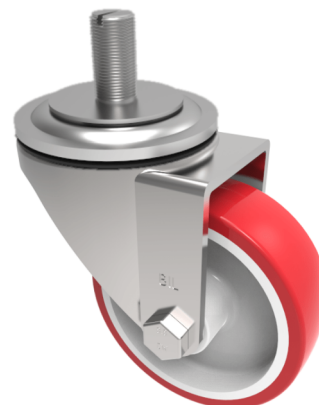


Polyurethane on Nylon Stem Swivel Castor 80mm 210kg Load

Product code: BZH80NPST

Pressed steel swivel castor with 12mm bolt hole fitted with a red polyurethane tyre on white nylon centred wheel with a plain bore fitted with a 16mm x 30mm threaded stem. Wheel diameter 80mm, tread width 33mm, overall height 110mm. Load capacity 210kg.



Diameter (mm)	80
Castor Type	Swivel
Fixing Option	Stem
Height (mm)	110
Wheel Material	Polyurethane on Nylon
Colour / Shore Hardness	Red Polyurethane on Nylon Rim / 96 Shore A
Temperature Resistance	-20 °C TO +70 °C
Bearing Type	Plain
Load Capacity (kg)	210
Tread (mm)	33
Swivel Radius (mm)	78
Head Dia (mm)	76
To Suit Fixing Bolt (mm)	M16 X 30

BIL GROUP LTD

Porte Marsh Road, Calne, Wiltshire, SN11 9BW

Registered in England No: 2603821

VAT Reg: GB572705729

