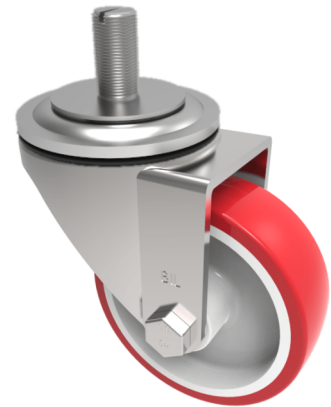


Polyurethane on Nylon Stem Swivel Castor 100mm 250kg Load

Product code: BZH100NPBST

Pressed steel swivel castor with a 16mm stem fitting with a red polyurethane tyred white nylon centred wheel with a roller bearing. Wheel diameter 100mm, tread width 33mm, overall height 128mm. Load capacity 250kg.



Diameter (mm)	100
Castor Type	Swivel
Fixing Option	Stem
Height (mm)	128
Wheel Material	Polyurethane on Nylon
Colour / Shore Hardness	Red Polyurethane on Nylon Rim / 96 Shore A
Temperature Resistance	-20 °C TO +70 °C
Bearing Type	Roller
Load Capacity (kg)	250
Tread (mm)	34
Swivel Radius (mm)	90
Head Dia (mm)	76
To Suit Fixing Bolt (mm)	M16 X 30

BIL GROUP LTD

Porte Marsh Road, Calne, Wiltshire, SN11 9BW

Registered in England No: 2603821

VAT Reg: GB572705729

