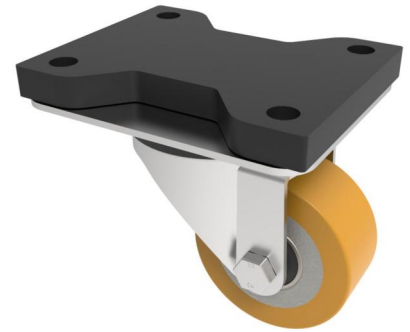


Polyurethane on Cast Iron Swivel Plate Castor 80mm 250kg

Product code: BZEH80PTBJFP

Pressed steel swivel castor with a top plate fixing fitted with a polyurethane tyre wheel on cast iron centre with ball bearings. Wheel diameter 80mm, tread width 36mm, overall height 125mm, top plate 135mm x 105mm, hole centres 105mm x 80mm. Load capacity 250kg.



Fixing Option	Plate
Diameter (mm)	80
Load Capacity (kg)	250
Castor Type	Swivel
Height (mm)	125
Wheel Material	Polyurethane on Cast Iron
Colour / Shore Hardness	Brown Polyurethane on Cast Iron Rim / 94 Shore A
Bearing Type	Ball
Tread (mm)	36
Fork Thickness (mm)	4
Temperature Resistance	-20 °C TO +80 °C
Plate Size (mm)	135 x 105
Hole Centres (mm)	105 x 80
Swivel Radius (mm)	78
Top Plate Thickness (mm)	18
To Suit Fixing Bolt (mm)	10

BIL GROUP LTD

Porte Marsh Road, Calne, Wiltshire, SN11 9BW

Registered in England No: 2603821

VAT Reg: GB572705729

