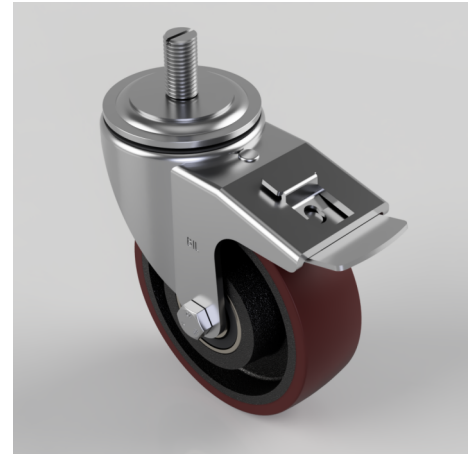


## Polyurethane on Cast Iron Stem Swivel Castor Brake 125mm 250kg Load

**Product code: BZH125PTBJSWBST**

Pressed steel swivel castor with a 16mm x 30mm stem fixing fitted with a brown polyurethane tyred on a cast iron centred wheel with ball bearings and total lock brake. Wheel diameter 125mm, tread width 40mm, overall height 157mm. Load capacity 250kg.



Diameter (mm)	125
Castor Type	Swivel with Total Lock Brake
Fixing Option	Stem
Height (mm)	157
Wheel Material	Polyurethane on Cast Iron
Colour / Shore Hardness	Brown Polyurethane on Cast Iron Rim / 94 Shore A
Temperature Resistance	-20 °C TO +80 °C
Bearing Type	Ball
Load Capacity (kg)	250
Tread (mm)	40
Swivel Radius (mm)	125
Head Dia (mm)	76
To Suit Fixing Bolt (mm)	M16 X 30

## BIL GROUP LTD

Porte Marsh Road, Calne, Wiltshire, SN11 9BW

Registered in England No: 2603821

VAT Reg: GB572705729

