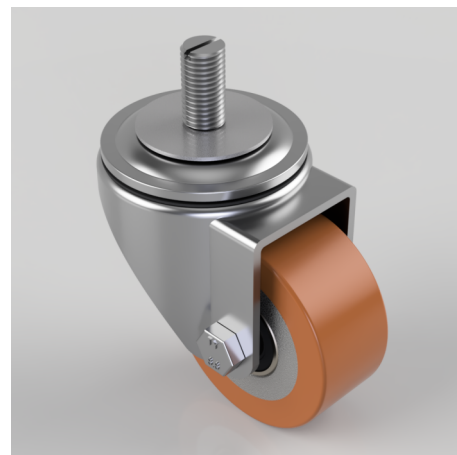


Polyurethane on Cast Iron Stem Swivel Castor 80mm 250kg Load

Product code: BZH80PTBJST

Pressed steel swivel castor fitted with a brown polyurethane on cast iron wheel with a ball bearing and fitted with a 16mm x 30mm threaded stem. Wheel diameter 80mm, tread width 36mm, overall height 106mm. Load capacity 250kg.



| | |
|--------------------------|--|
| Diameter (mm) | 80 |
| Castor Type | Swivel |
| Fixing Option | Stem |
| Height (mm) | 106 |
| Wheel Material | Polyurethane on Cast Iron |
| Colour / Shore Hardness | Brown Polyurethane on Cast Iron Rim / 94 Shore A |
| Temperature Resistance | -20 °C TO +80 °C |
| Bearing Type | Ball |
| Load Capacity (kg) | 250 |
| Tread (mm) | 36 |
| Swivel Radius (mm) | 78 |
| Head Dia (mm) | 76 |
| To Suit Fixing Bolt (mm) | M16 X 30 |

BIL GROUP LTD

Porte Marsh Road, Calne, Wiltshire, SN11 9BW

Registered in England No: 2603821

VAT Reg: GB572705729

