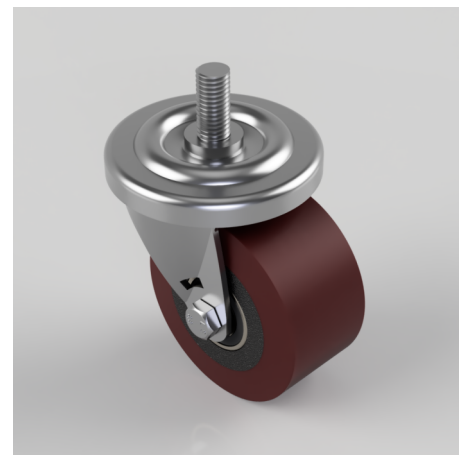


Polyurethane on Cast Iron Stem Swivel Castor 75mm 125kg Load

Product code: BZH75PTBJM12X25

Pressed steel swivel castor with a 12mm x 25mm threaded stem fitted with a polyurethane tyred cast iron centred wheel with ball bearings. Wheel diameter 75mm, tread width 40mm, overall height 95mm. Load capacity 125kg.



Diameter (mm)	75
Castor Type	Swivel
Fixing Option	Stem
Height (mm)	95
Wheel Material	Polyurethane on Cast Iron
Colour / Shore Hardness	Brown Polyurethane on Cast Iron Rim / 94 Shore A
Temperature Resistance	-20 °C TO +80 °C
Bearing Type	Ball
Load Capacity (kg)	125
Tread (mm)	40
Swivel Radius (mm)	60
Head Dia (mm)	78
To Suit Fixing Bolt (mm)	M12 X 25

BIL GROUP LTD

Porte Marsh Road, Calne, Wiltshire, SN11 9BW

Registered in England No: 2603821

VAT Reg: GB572705729

