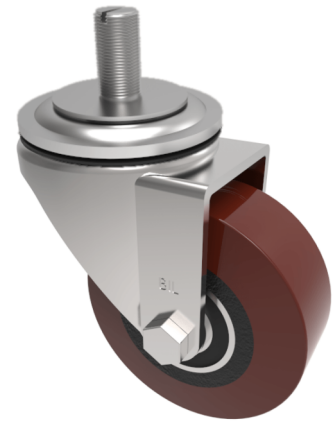


Polyurethane on Cast Iron Stem Swivel Castor 100mm 250kg Load

Product code: BZH100PTBJST

Pressed steel swivel castor with a 16mm x 25mm fixing fitted with a polyurethane tyred cast iron centred wheel with ball journal bearings. Wheel diameter 100mm, tread width 40mm, overall height 128mm. Load capacity 250kg.



Diameter (mm)	100
Castor Type	Swivel
Fixing Option	Stem
Height (mm)	128
Wheel Material	Polyurethane on Cast Iron
Colour / Shore Hardness	Brown Polyurethane on Cast Iron Rim / 94 Shore A
Temperature Resistance	-20 °C TO +80 °C
Bearing Type	Ball
Load Capacity (kg)	250
Tread (mm)	40
Swivel Radius (mm)	90
Head Dia (mm)	76
To Suit Fixing Bolt (mm)	M16 X 30

BIL GROUP LTD

Porte Marsh Road, Calne, Wiltshire, SN11 9BW

Registered in England No: 2603821

VAT Reg: GB572705729

