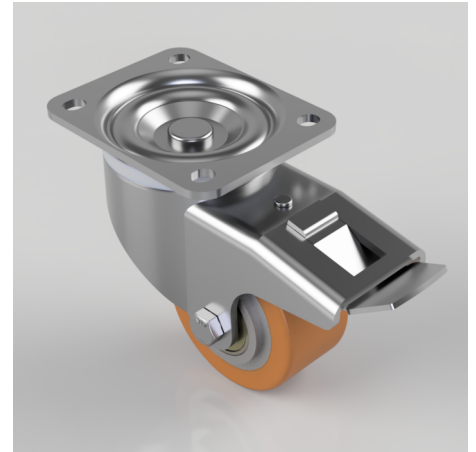


## Polyurethane on Cast Iron Plate Swivel Castor Brake 100mm 350kg Load

**Product code: V52Q100PTJP05**

Pressed steel swivel castor with a top plate fixing fitted with polyurethane on cast iron centred wheel with ball journal bearings and total lock brake. Wheel diameter 100mm, tread width 50mm, overall height 150.5mm, top plate 135mm x 110mm, hole centres 105mm x 80mm. Load capacity 350kg.



|                          |   |
|--------------------------|---|
| Diameter (mm)            | 100                                       |
| Castor Type              | Swivel with Total Lock Brake              |
| Fixing Option            | Plate                                     |
| Height (mm)              | 150.5                                     |
| Wheel Material           | Polyurethane on Cast Iron                 |
| Colour / Shore Hardness  | Brown Polyurethane on Cast Iron Rim / TBC |
| Temperature Resistance   | TBC                                       |
| Bearing Type             | Ball                                      |
| Load Capacity (kg)       | 350                                       |
| Tread width (mm)         | 50  |
| Swivel Radius (mm)       | 167                                       |
| Plate Size (mm)          | 135 x 110                                 |
| Hole Centres (mm)        | 105 x 80                                  |
| Top Plate Thickness (mm) | 5   |
| Fork Thickness (mm)      | 5   |
| To Suit Fixing Bolt (mm) | 10  |
| Brand                    | Varley                                    |

## BIL GROUP LTD

Porte Marsh Road, Calne, Wiltshire, SN11 9BW

Registered in England No: 2603821

VAT Reg: GB572705729

