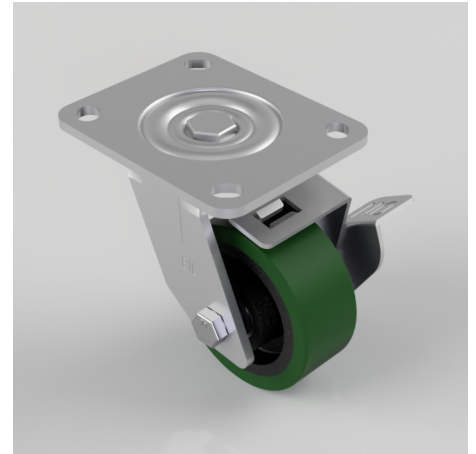


Polyurethane on Cast Iron Plate Swivel Castor Brake 100mm 300kg Load

Product code: BZEJ100EPTBJBK

Fabricated swivel castor with top plate fixing fitted with green polyurethane tyre on cast iron centred wheel with ball bearing and side fitting wheel brake. Wheel diameter 100mm, tread width 40mm, overall height 142mm plate size 135mm x 110mm, hole centers 105mm x 80mm. Load capacity 300kg.



Diameter (mm)	100
Fixing Option	Plate
Castor Type	Swivel with Wheel Brake
Bearing Type	Ball
Height (mm)	142
Plate Size (mm)	135 x 110
Hole Centres (mm)	105 x 80
To Suit Fixing Bolt (mm)	12
Wheel Material	Polyurethane on Cast Iron
Colour / Shore Hardness	Green Polyurethane on Cast Iron Rim / 94 Shore A
Temperature Resistance	-20 °C TO +80 °C
Top Plate Thickness (mm)	5.5
Fork Thickness (mm)	5.5
Swivel Radius (mm)	90
Load Capacity (kg)	300
Tread (mm)	40

BIL GROUP LTD

Porte Marsh Road, Calne, Wiltshire, SN11 9BW

Registered in England No: 2603821

VAT Reg: GB572705729

