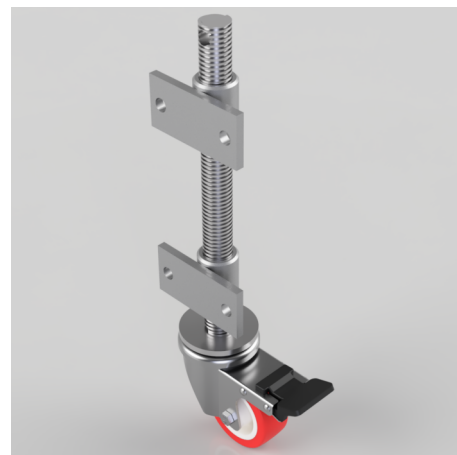


Polyurethane Nylon Plate Swivel Castor Brake Locking Castor 80mm 200kg Load

Product code: JAB80NPBSWB

Open screw thread jacking castor with side fitting nuts with 160mm lift fitted with a 80mm white zinc plated swivel pressed steel castor with a red polyurethane tyred white nylon centred wheel with a roller bearing and a load capacity of 200kg. Please note Jacking castors are rated on a different principal to other castors and we recommend the total lifted load is divided over just 2 jacking units. 1 extra safety point is when jacked up please beware of any obstacles as a sudden shock could result in the inner square tube bending around the outer tube and this can also happen if the user forgets to take the brake off. Please refer to the BIL catalogue or request a drawing. Please refer to the BIL catalogue or request a drawing.



Diameter (mm)	80
Castor Height (mm)	110
Castor Type	Swivel with Total Lock Brake
Swivel Radius (mm)	125
Fixing Option	Plate
Bearing Type	Roller
To Suit Fixing Bolt (mm)	12
Wheel Material	Polyurethane on Nylon
Colour / Shore Hardness	Red Polyurethane on Nylon Rim / 96 Shore A
Temperature Resistance	-20 °C TO +70 °C
Load Capacity (kg)	200
Tread (mm)	33
Height (mm)	426
Lifting Stroke (mm)	160

BIL GROUP LTD

Porte Marsh Road, Calne, Wiltshire, SN11 9BW

Registered in England No: 2603821

VAT Reg: GB572705729

