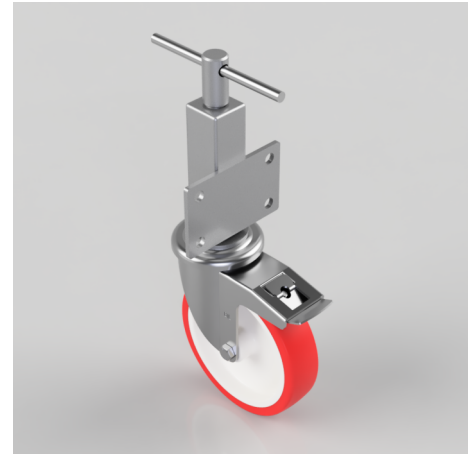


## Polyurethane Nylon Plate Swivel Castor Brake Locking Castor 200mm 250kg Load

**Product code: JAZ200NPSWB**

Zinc plated box jacking unit with side fitting plate and a 75mm lift fitted with a 200mm red polyurethane tyred nylon centred plain bore wheel wheel and a total lock brake with a load capacity of 200kg Please note Jacking castors are rated on a different principal to other castors and we recommend the total lifted load is divided over just 2 jacking units. 1 extra safety point is when jacked up please beware of any obstacles as a sudden shock could result in the inner square tube bending around the outer tube and this can also happen if the user forgets to take the brake off. Please refer to the BIL catalogue or request a drawing



Diameter (mm)	200
Castor Height (mm)	238
Castor Type	Swivel with Total Lock Brake
Swivel Radius (mm)	167
Fixing Option	Plate
Bearing Type	Plain
To Suit Fixing Bolt (mm)	14
Wheel Material	Polyurethane on Nylon
Colour / Shore Hardness	Red Polyurethane on Nylon Rim / 96 Shore A
Temperature Resistance	-20 °C TO +70 °C
Load Capacity (kg)	250
Tread (mm)	48
Height (mm)	476 / 551
Lifting Stroke (mm)	75

## BIL GROUP LTD

Porte Marsh Road, Calne, Wiltshire, SN11 9BW

Registered in England No: 2603821

VAT Reg: GB572705729

